

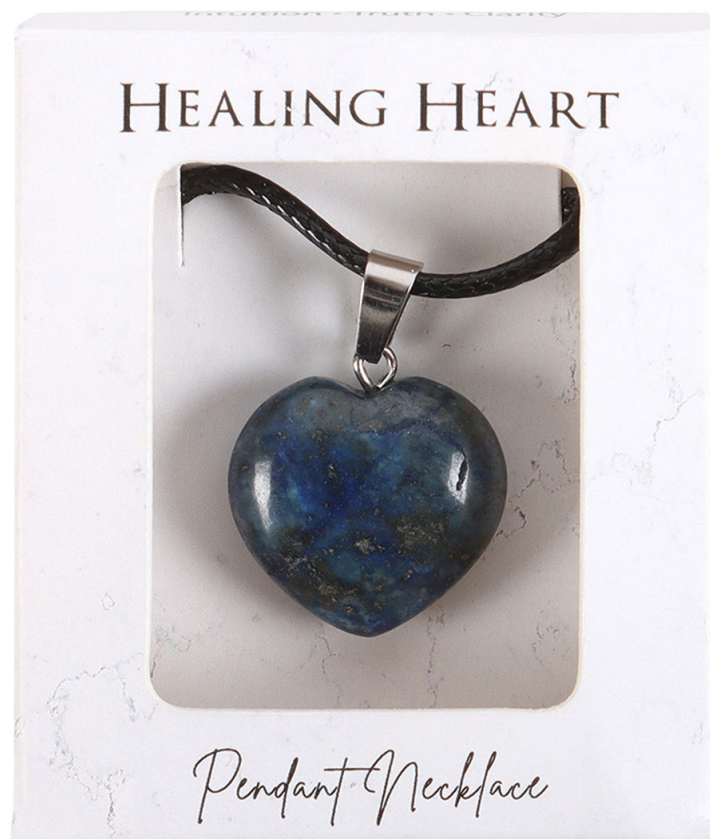


Product Technical File

Something Different Wholesale Ltd, Upper Fforest Way, Enterprise Park, Swansea,
SA6 8PJ

EU RP: Something Different Wholesale Ltd, Utrechtseweg 341, 3818 EL Amersfoort,
Netherlands

CE_33524
Lapis Lazuli Heart Crystal Necklace (9/36)
Barcode:5056131148642





Product Description

Heighten intuition and promote truth and clarity with this lapis lazuli healing crystal heart necklace. Makes a meaningful gift for those in need of an extra dose of positivity, strength, and care. Strung on a 16 inch cord with lobster clasp and extender chain. Designed by Something Different Wholesale and part of the Crystal Earth range of natural crystal healing gifts.

The product is manufactured in China

Product Dimensions:

W 2cm x H 2.4cm x D 1cm

Product Weight:

8g

Product Materials :

Gems & Stones

Packaging Materials:

White Cardboard Box with Sticker

Tracability:

Packaging Information:

W 5cm x H 6cm x D 2cm

Packed Weight:

15



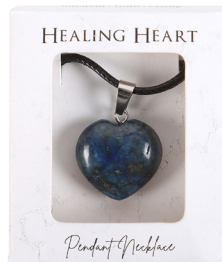
Declaration of Conformity

Something Different Wholesale Ltd, Upper Fforest Way, Enterprise Park,
Swansea, SA6 8PJ

Contact Person- Anthony David

Email – customercare@somethingdifferentwholesale.co.uk

Phone Number – 01792 940288



Product Name: Lapis Lazuli Heart Crystal Necklace (9/36)

ModelG-JE

Product Code: CE_33524

We at Something Different Wholesale LTD recognise that the product mentioned in this document conforms to UK standards and regulations. This product upholds the UK specifications attached to it.

Authorising Name: Anthony David

Company Name: Something Different Wholesale LTD

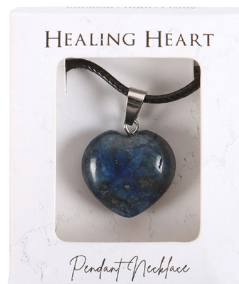
Authorising Signature:

A handwritten signature in black ink, consisting of a stylized 'A' followed by a horizontal line.

Date: 10.04.2025
Review Date: 10.04.2026

EU Declaration of Conformity

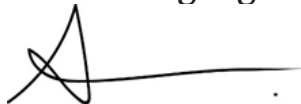
Name- Something Different Wholesale Ltd
Address- Something Different Wholesale Ltd, Utrechtseweg 341, 3818 EL
Amersfoort, Netherlands
Contact person- Anthony David
Email – EU@somethingdifferentwholesale.co.uk
Phone Number – +441792 940288



Product Name: Lapis Lazuli Heart Crystal Necklace (9/36)
Model:G-JE
Product Code:CE_33524

We at Something Different Wholesale LTD recognise that the product mentioned in this document conforms to UK standards and regulations. This product upholds the UK specifications attached to it.

Authorising Name: Anthony David
Company Name: Something Different Wholesale LTD
Authorising Signature:



Date: 10.04.2025
Review Date:10.04.2026



Hazard

**Who might be
harmed**

**Existing
measure to
control risk**

Risk level

Allergy	General Public	Registration, Evaluation, Authorisation and Restriction of Chemicals, and is the EU Regulation (EC) No 1907/2006.	Low
Skin irritation	General Public	Registration, Evaluation, Authorisation and Restriction of Chemicals, and is the EU Regulation (EC) No 1907/2006.	Low
Material composition changes	General Public	Avoid showering or swimming while wearing your jewellery. Keep Jewellery away from perfumes or harsh chemicals.	Low
Ingestion	Children	Not a toy, Keep out of the reach of children	Low
Choking	Children	Not a toy, Keep out of the reach of children	Low

Directions for Use

This product has been designed and manufactured by Something Different Wholesale LTD. Our jewellery products have not been designed for the use of children, as some may contain small parts. Each product is clearly labelled to keep out of the reach of children, and “This is not a toy” is stated on the packaging. Jewellery designed by Something Different Wholesale LTD is intended as costume jewellery. Each product is accompanied with care instructions “Avoid showering or swimming while wearing your jewellery. Keep jewellery away from perfumes or harsh chemicals.”

All jewellery products are tested under Registration, Evaluation, Authorisation and Restriction of Chemicals, and is the EU Regulation (EC) No 1907/2006 to ensure, Lead content must not exceed 0.05% by weight, and cadmium must not exceed 0.01%. We require products to pass Testing Standard: EN 1811:2011 for nickel, lead, and cadmium release. Nickel must not exceed 0.5 µg/cm²/week. Our Jewellery is tested according to testing standard is EN 12472 (simulation of wear and corrosion) followed by EN 1811.

Date: 22.11.2024

Review Date: 22.10.2025



Prism: Product Risk Assessment Methodology

Risk assessment background and summary of outcomes			
Assessor name:	Stacey Gannon	Organisation:	Something Different Wholesale LTD
Date of initial assessment:	21 March 2025	Assessment reviewed by:	
Date of last update:		Assessment review date:	
Product brand:		Product category:	Jewellery
Product name/model:		Product subcategory:	
Other identifiers (such as batch reference):		Name of business that placed the product on the market:	Something Different Wholesale LTD
Applicable product safety legislation and standards:		Have images been captured of the product?:	Yes
Who is the product aimed at?:	General Public	Number of hazards identified:	3
Could unintended or non-users be at risk?	Yes	Can the product be presumed to present a serious risk without a quantified risk assessment?:	No
Single product item risk level:	Medium risk	Has the risk outcome been revised to reflect there being multiple hazards?:	No, the hazard creating the greatest risk sufficiently reflects the overall product risk
Estimated number of product items in use:		Overall level of risk for product:	Medium risk
Sensitivity analysis outcome:	Sensitivity analysis not performed	Uncertainty level:	Low uncertainty
Factors related to the nature of the risk: outcome:	There are factors in addition to the risk level that need to be taken account of in relation to risk management decisions	Risk tolerability outcome:	Risk is tolerable



