



## Product Technical File

### Something Different Wholesale LTD

UK Business Address - Enterprise Park, Upper Fforest Way, Llansamlet,  
Swansea SA6 8PJ

EU Business Address - Something Different Wholesale Europe BV Posthoorn-  
straat 11, 3011WD, Rotterdam, NETHERLANDS

Telephone - +44 (0)1792 940288 Email [customercare@somethingdifferent-  
wholesale.co.uk](mailto:customercare@somethingdifferent-wholesale.co.uk)

Item Code: BH\_28827

Product Name: Matcha Made in Heaven Ceramic Mug with Coaster Lid (12/24)  
Barcode: 5056131178977





**Product Description**

The product is China

**Product Dimensions:**  
W cm x H cm x D cm

**Product Weight:**  
0g

**Product Materials :**  
Ceramic

**Packaging Materials:**  
Colour Cardboard Box,

**Tracability:**  
17653  
31/03/2026  
00851-25

**Packaging Information:**  
W cm x H cm x D cm

**Packed Weight:**  
0g



## Declaration of Conformity

Something Different Wholesale Ltd, Upper Fforest Way, Enterprise Park,  
Swansea, SA6 8PJ

Contact Person- Anthony David

Email – [customercare@somethingdifferentwholesale.co.uk](mailto:customercare@somethingdifferentwholesale.co.uk)

Phone Number – 01792 940288



Product Name: Matcha Made in Heaven Ceramic Mug with Coaster Lid  
(12/24)

ModelG-MU

Product Code: BH\_28827

We at Something Different Wholesale LTD recognise that the product mentioned in this document conforms to UK standards and regulations. This product upholds the UK specifications attached to it.

Authorising Name: Anthony David

Company Name: Something Different Wholesale LTD

Authorising Signature:

Date: 10.06.2025

## EU Declaration of Conformity

Name- Something Different Wholesale Ltd  
Address- Something Different Wholesale Ltd, Posthoornstraat 11, 3011WD,  
Rotterdam, NETHERLANDS  
Contact person- Anthony David  
Email - EU@somethingdifferentwholesale.co.uk  
Phone Number - +441792 940288



Product Name: Matcha Made in Heaven Ceramic Mug with Coaster Lid  
(12/24)  
Model:G-MU  
Product Code:BH\_28827

We at Something Different Wholesale LTD recognise that the product mentioned in this document conforms to UK standards and regulations. This product upholds the UK specifications attached to it.

Authorising Name: Anthony David  
Company Name: Something Different Wholesale LTD  
Authorising Signature:



Date: 10.04.2025  
Review Date:10.04.2026



## Prism: Product Risk Assessment Methodology

Risk assessment background and summary of outcomes			
Assessor name:	<b>Shirley Gannon</b>	Organisation:	<b>Something Different Wholesale LTD</b>
Date of initial assessment:	<b>21 March 2021</b>	Assessment reviewed by:	
Date of last update:		Assessment review date:	
Product brand:		Product category:	Kitchen and Tableware
Product name/model:		Product subcategory:	
Other identifiers (such as batch reference):		Name of business that placed the product on the market:	<i>Something Different Wholesale LTD</i>
Applicable product safety legislation and standards:		Have images been captured of the product?:	Yes
Who is the product aimed at?:	<b>General Public</b>	Number of hazards identified:	3
Could unintended or non-users be at risk?	<b>Yes</b>	Can the product be presumed to present a serious risk without a quantified risk assessment?:	<b>No</b>
Single product item risk level:	<b>Medium risk</b>	Has the risk outcome been revised to reflect there being multiple hazards?:	<b>No, the hazard creating the greatest risk sufficiently reflects the overall product risk</b>
Estimated number of product items in use:		Overall level of risk for product:	<b>Medium risk</b>
Sensitivity analysis outcome:	<b>Sensitivity analysis not performed</b>	Uncertainty level:	<b>Low uncertainty</b>
Factors related to the nature of the risk: outcome:	<b>There are factors in addition to the risk level that need to be taken account of in relation to risk management decisions</b>	Risk tolerability outcome:	<b>Risk is tolerable</b>



### Food Imitation Risk Analysis

Something Different Wholesale Ltd, Upper Fforest Way, Enterprise Park, Swansea,  
SA6 8PJ

EU RP: Something Different Wholesale Ltd, Utrechtseweg 341, 3818 EL Amersfoort, Netherlands

**Product:** BH\_28827

**Matcha Made in Heaven Ceramic Mug with Coaster Lid (12/24)**



Office for Product  
Safety & Standards

## **Prism: Product Risk Assessment Methodology**

<b>Risk assessment background and summary of outcomes</b>			
<b>Assessor name:</b>	Stacey Gannon	<b>Organisation:</b>	Something Different Wholesale LTD
<b>Date of initial assessment:</b>	22 December 2025	<b>Assessment reviewed by:</b>	Rebecca Hawkes

<b>Date of last update:</b>		<b>Assessment review date:</b>	17 December 2026
<b>Product brand:</b>	Drinkware	<b>Product category:</b>	Food-imitating products
<b>Product name/model:</b>	Matcha Made in Heaven Ceramic Mug with Coaster Lid (12/24)	<b>Product subcategory:</b>	
<b>Other identifiers (such as batch reference):</b>	BH_28827	<b>Name of business that placed the product on the market:</b>	<i>Something Different Wholesale LTD</i>
<b>Applicable product safety legislation and standards:</b>	EU Regulation 2023/988 on General Product Safety	<b>Have images been captured of the product?:</b>	Yes
<b>Who is the product aimed at?:</b>	General Public	<b>Number of hazards identified:</b>	1

<b>Could unintended or non-users be at risk?</b>	Yes	<b>Can the product be presumed to present a serious risk without a quantified risk assessment?:</b>	No
<b>Single product item risk level:</b>	Low risk	<b>Has the risk outcome been revised to reflect there being multiple hazards?:</b>	No, the hazard creating the greatest risk sufficiently reflects the overall product risk
<b>Estimated number of product items in use:</b>	5000	<b>Overall level of risk for product:</b>	Low risk
<b>Sensitivity analysis outcome:</b>	Risk level not likely to change when uncertainty taken into account	<b>Uncertainty level:</b>	Medium uncertainty
<b>Factors related to the nature of the risk: outcome:</b>	There are no factors other than the risk level to take account of in relation to risk management decisions	<b>Risk tolerability outcome:</b>	Risk is tolerable



## Warnings

This product is supplied with warnings including

- This item is not food.
- This item is not a toy.
- For safety, keep away from children and pets.

Whilst the products creativity is inspired from food, the products described are distinct from the biological counterparts with limited scope for confusion as food due to their respective size. Their size, texture and aroma are disproportionate from the models that each item is based upon. It is clearly stated that this product is not intended as a toy or for children and are to be kept out of the reach of children and pets to prevent choking or ingestion. This product is classed as nontoxic and non-hazardous.

## Declaration

Something Different Wholesale Ltd, Upper Fforest Way, Enterprise Park, Swansea, SA6 8PJ

**Contact Person** - Anthony David

**Email** - [customercare@somethingdifferentwholesale.co.uk](mailto:customercare@somethingdifferentwholesale.co.uk)

**Phone Number** - 01792 940288

We at Something Different Wholesale LTD recognise that the product mentioned in this document conforms to UK standards and regulations. This product upholds the UK specifications attached to it.



**Authorising Name:** Anthony David

**Company Name:** Something Different Wholesale LTD

**Authorising Signature:**

Date: 22.12.2025

Review Date:22.10.2026

# **Declaration of Conformity**

## **Issuer/Manufacturer:**

**SHENZHEN ZHAN PENG XIANG INDUSTRIAL CO.,LTD.**

**Address: 34AB,Block B, Reith International, 1002 Yanhe north road,  
Luohu District, Shenzhen,China**

## **Importer:**

**SOMETHING DIFFERENT WHOLESALE LTD**

**Address: UPPER FFOREST WAY ENTERPRISE PARK  
SWANSEA SA6 8PJ UK**

## **Product:**

**Name: Ceramic mugs**

## **Model:**

**BH\_28827, DW\_24927, DW\_25027, CL\_43126, MF\_07625, DF\_79323,  
LC\_38026,**

**Material: New bone china**

**Time and temperature: 7 hours and 1260℃**

**Country of origin: China**

## **Information about the test methods:**

**With reference to European Directive 84/500/EEC and its amendment 2005/31/EC.**

**With reference to DIN10955:2004, direct contact method. No.of panelist:6**

**The products can be contacted with all kind of food. We declare that the products described above, to which this declaration of conformity refers to, is in conformity with the essential requirements of the following legislation:**

**-European Council Directive 84/500/EEC & its amendment 2005/31/EC-Leachable Lead and Cadmium**

**-Regulation(EC)No 1935/2004 of the European Parliament and of the council of 27 October 2004-Sensorial Examination of food and taste test**

Child Appeal Scoring System

UK: Something Different Wholesale Ltd, Upper Fforest Way, Enterprise Park, Swansea, SA6 8PJ  
 EU : Something Different Wholesale Ltd, Posthoornstraat 11,3011WD Rotterdam NETHERLANDS

Item Code : BH\_28827 Date: 08/01/2026  
 Product Name : Matcha Made in Heaven Ceramic Mug with Coaster Lid (12/24) Reviewed By: SG



The Child Appeal Scoring System (CASS) is a structured framework designed to assess the extent to which a product is likely to attract and engage children. In an environment where children are frequently exposed to a wide range of consumer products. It is increasingly important to evaluate not only the safety and compliance of these products but also their degree of child-directed appeal. Using the following score system, evaluate the product design for further risk analysis.

- 1(Low Appeal) – unlikely to engage children, mainly adult-focused.
- 2(Moderate Appeal) – contains some features that may attract children, but not intentionally child-directed.
- 3(High Appeal) – intentionally designed to be attractive to children.
- 4 (Very High Appeal) – strongly child-focused, with multiple overlapping features.

This scoring provides a clear benchmark for comparisons between products and across industries.

**Visual Appeal: Assess the product design between 0-3 on the following criteria to evaluate the designs appeal and targeted audience.**

Caterogry	Criteria	Score Range	Score Given
Visual Appeal	Colours (bright, saturated)	0-3	0
	Characters (cartoons, mascots)	0-3	0
	Design simplicity (bold shapes, fonts)	0-3	1
	Animation/Movement	0-3	0
	Novelty/Whimsy (fantasy, humour)	0-3	0

**Sensory Elements: Assess the product design between 0-3 on the following criteria to evaluate the designs appeal and targeted audience.**

Caterogry	Criteria	Score Range	Score Given
Sensory Elements	Sounds/Music	0-3	0
	Textures/Materials	0-3	0
	Interactivity (buttons,lights,haptics)	0-3	0
	Collectability	0-3	0

**Functional Design: Assess the product design between 0-3 on the following criteria to evaluate the designs appeal and targeted audience.**

Caterogry	Criteria	Score Range	Score Given
Functional Design	Ease of Use	0-3	0
	Size & Ergonomics	0-3	0
	Durability & Safety	0-3	1

**Psychological & Social Appeal: Assess the product design between 0-3 on the following criteria to evaluate the designs appeal and targeted audience.**

Caterogry	Criteria	Score Range	Score Given
Psychological & Social Appeal	Rewards & Feedback	0-3	0
	Storytelling/Imagination	0-3	0
	Peer Influence	0-3	0
	Media Tie-ins	0-3	0

**Marketing & Placement: Assess the product design between 0-3 on the following criteria to evaluate the designs appeal and targeted audience.**

Caterogry	Criteria	Score Range	Score Given
Marketing & Placement	Age Targeting	0-3	0
	Advertising Context	0-3	0
	Packaging Language/Imagery	0-3	0

#### Child Appeal Score Indicator

0-15 = Low child appeal (primarily adult-focused product).

16-30 = Moderate child appeal (some child-friendly elements, but not primarily for kids).

31-45 = High child appeal (likely designed with children in mind).

46-57 = Very high child appeal (strongly targeted to children).

**Overall Score : 2**

I confirm that the assessment conducted under the Child Appeal Scoring System (CASS) has been completed to the best of my knowledge and ability. The scores recorded in this assessment are a true and accurate reflection of the product, service, or communication reviewed at the time of evaluation. The scoring has been carried out using the standardised CASS framework, with due care, impartiality, and adherence to the defined criteria. No material information has been knowingly omitted or misrepresented in the completion of this assessment. The conclusions reached are based on the evidence available and are intended to provide a transparent and consistent measure of child-directed appeal. This document may be relied upon for internal review, regulatory compliance, or external reporting purposes, subject to the limitations of the CASS methodology.



Something Different Wholesale Ltd, Upper Fforest Way, Enterprise Park, Swansea,  
SA6 8PJ

EU : Something Different Wholesale Ltd, Posthoornstraat 11,3011WD Rotterdam NETH-  
ERLANDS

Distributor: Something Different Wholesale LTD

Date – 20/10/2025

Product Identifier –G–MU

Material – Ceramic

Recommended Use: Decorative consumer product.

Restrictions – N/A

Supplier: Something Different Wholesale Ltd, Upper Fforest Way, Enterprise Park,  
Swansea, SA6 8PJ

#### REACH SVHC & Proposition 65 Declaration

REACH<sup>1</sup> regulation (EC) No 1907/2006 concerning the Registration, Evaluation, Au-  
thorisation and Restriction of Chemicals, states in Article 33 that any supplier of an arti-  
cle containing a substance being included in the REACH Candidate List of Substances of  
Very High Concern for authorisation ('Candidate List of SVHC') in a concentration above  
0.1 % weight by weight (w/w), shall provide the recipient, respectively the consumer of  
the article, with relevant information.

California Proposition 652 officially known as the Safe Drinking Water and Toxic En-  
forcement Act of 1986, aims to protect the state of California drinking water sources  
from being contaminated with chemicals known to cause cancer, birth defects or other  
reproductive harm, and requires businesses to inform Californians about exposures to  
such chemicals.

External Testing and Validation All textile products are sample tested by an accredited  
external laboratory to ensure compliance with REACH and Proposition 65 requirements.  
As these are articles under REACH definition, no Safety Data Sheet (SDS) is required.



With regard to REACH regulation

We declare that:  = applicable     = not applicable

Our products and packaging do not contain SVHC substances included in the REACH Candidate List currently in force, as published by ECHA (<http://echa.europa.eu/web/guest/candidate-list-table>), at a content greater or equal to 0.1% (w/w)

To the best of our knowledge, we herewith inform you that we supply certain products of which components, or the products themselves, contain SVHC(s).

We have determined that there are no known REACH Annex XVII restricted substances, or Annex XIV substances subject to authorisation, contained in our products and packaging.

To the best of our knowledge, we herewith inform you that we supply certain products of which components, or the products themselves, contain substances that are listed in the updated REACH Annex XVII or Annex XIV.

With regard to Proposition 65

We declare that:  = applicable     = not applicable

The parts/products that we supply to the end user do not contain substances described in the most current revision of the California Proposition 65, that the end user or an employee could be exposed to under normal part/product use.

The current Proposition 65 List is available here: [PROP 65 LIST](#).

To the best of our knowledge, we supply you certain products of which components, or the products themselves, contain substances described in the most current revision of the California Proposition 65, that the end user or an employee could be exposed to under normal part/product use.



We maintain documentation and laboratory test reports to demonstrate compliance, available upon request. Should any relevant regulatory changes or product modifications occur, we will issue an updated declaration.

We also declare that:  = applicable  = not applicable

We are in close contact with our suppliers and we regularly check our substances/ preparations/ articles against the current Candidate List. If any changes in the content, or the compliance of our products arise from the REACH regulation and/or from the Proposition 65 list, we will inform you and coordinate the necessary measures with you.

#### Declaration of Validity

This declaration remains valid until any of the substances listed in REACH or California Proposition 65 are updated, or a product material change occurs.

Authorised Signatory:

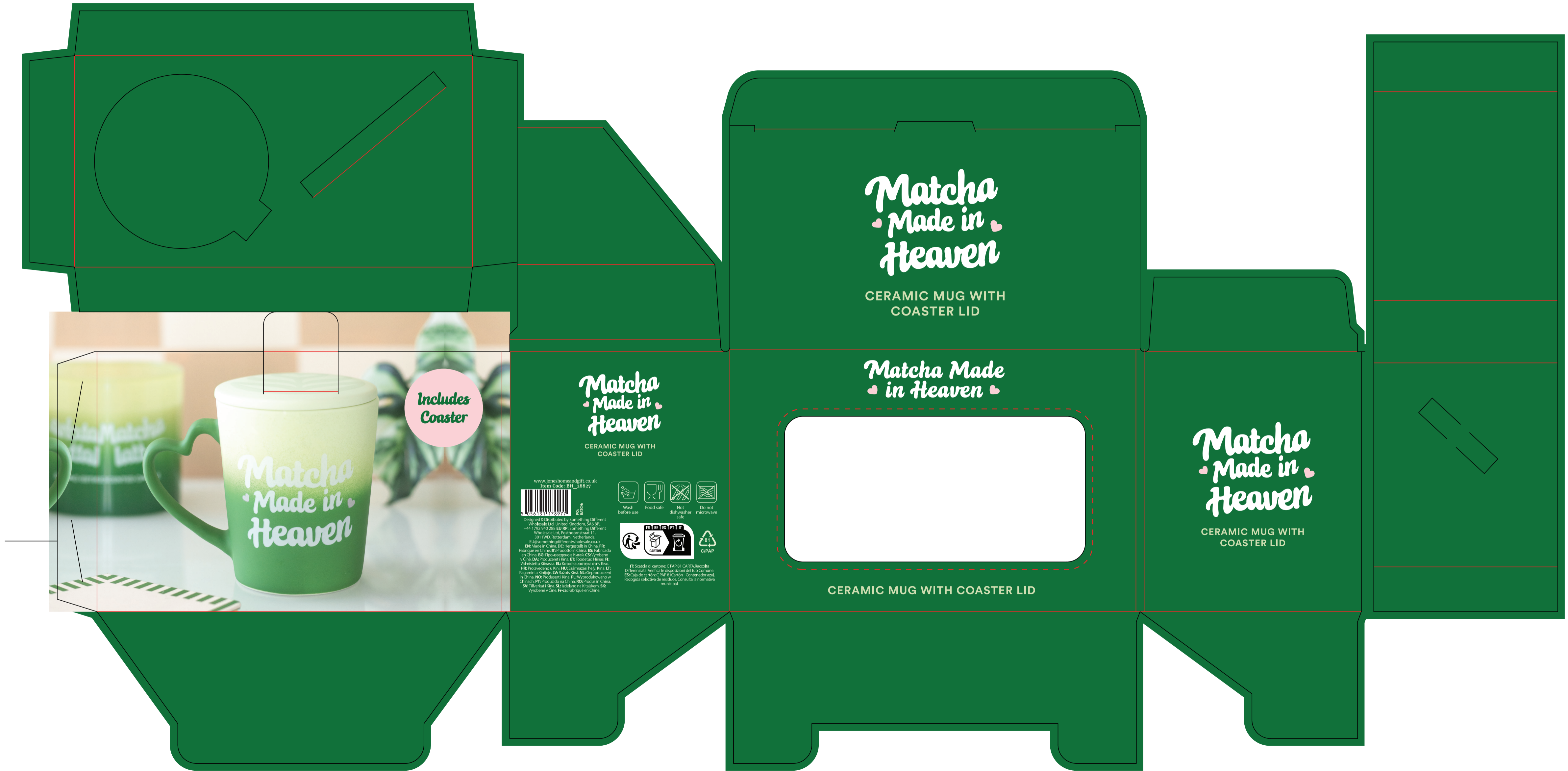
Name: Stacey Gannon

Position: Quality Assurance Assistant

Signature:

Date: 08-01-2026

Review Date: 07-01-2027



Job Number	SDW11994				
Product Description	Matcha Made in Heaven Ceramic Mug with Coaster Lid				
Item Code	BH_28827				
Other Details	Barcode: 5556131138977 Other Information:				
Colours	<table border="1"> <tr> <td>Pattern * 2026</td> <td>Pattern * 2276</td> <td>Pattern * 706</td> <td>Pattern * 958</td> </tr> </table>	Pattern * 2026	Pattern * 2276	Pattern * 706	Pattern * 958
Pattern * 2026	Pattern * 2276	Pattern * 706	Pattern * 958		
The document is not colour accurate. Always refer to colours referenced.					
Please Note All designs and artworks are owned by Something Different Wholesale.					

**Matcha Made in Heaven**  
 CERAMIC MUG WITH COASTER LID  
 www.joneshomasandgift.co.uk  
 Item Code: BH\_28827  

 EN: Made in China. DE: Hergestellt in China. FR: Fabriqué en Chine. IT: Prodotto in Cina. ES: Fabricado en China. BG: Произведено в Китай. CS: Vyrobeno v Číně. DA: Produceret i Kina. ET: Toodetud Hiinas. FI: Valmistettu Kiinaan. EL: Παρασκευασμένο στην Κίνα. HR: Proizvedeno u Kini. HU: Szérmazott Kínából. LT: Pagaminta Kinijoje. LV: Izstrādāta Ķīnā. NL: Gemaakt in China. NO: Produsert i Kina. PL: Wyprodukowano w Chinach. PT: Produzido na China. RO: Produs în China. SV: Tillverkad i Kina. SL: Izdelano na Kitajskem. SK: Vyrobené v Číne. FI-ca: Fabriquat en Chine.



CERAMIC MUG WITH COASTER LID

**Matcha Made in Heaven**  
 CERAMIC MUG WITH COASTER LID